

Y-SOFT
SAFEQ™

**YSOFT
WORKFLOW
SOLUTIONS
PLATFORM**

WWW.YSOFT.COM

YSoft SafeQ is a workflow solutions platform designed for organizations looking to manage and reduce print services costs, create more efficient, digital workflows and to increase document/3D object security across 2D and 3D printer fleets.

As an enterprise office technology leader, we are focused on helping IT organizations build smart business.

**PRINT
MANAGEMENT**

+

**DOCUMENT
CAPTURE**

+

**3D PRINT
MANAGEMENT**

THE YSOFT SAFEQ PLATFORM OFFERS:

■ PRINT MANAGEMENT

Centralized print management to reduce print costs by at least 30%, increase document security, and improve productivity. Includes pull-printing to print from any device and fact-based usage audits

■ DOCUMENT CAPTURE

Improves workflow productivity with automated document capture and delivery, enforces digital security governance and speeds up document search and retrieval

■ 3D PRINT MANAGEMENT

Whether used for rapid prototyping or finished goods, we offer fast, high-quality 3D output. With print management and accounting system integration, we add 3D object security, accurate cost recovery and allocation.

Y-SOFT SAFEQ™ WORKFLOW SOLUTIONS PLATFORM

Today's organizations are looking for ways to work smarter when implementing enterprise office solutions. Reducing costs, improving productivity and increasing the security of content are concerns no matter where an organization is on its print management and digitization journey.

Working smarter also means simplifying the approach when deploying solutions. Y Soft understands these needs and introduces the most comprehensive and flexible platform yet for companies of any size.

The YSoft SafeQ platform is a workflow solutions platform designed to meet the growing needs of organizations looking to effectively manage and reduce print services costs across 2D and 3D fleets, to create more efficient, digital workflows and to increase document security.

A MODULAR PLATFORM

The YSoft SafeQ platform offers comprehensive enterprise print management and document capture workflows through a choice of easy-to-use, easy-to-deploy software suites. Each suite is modular – an organization can choose an entire suite or just the suite modules that are right for them today. Adding more features from one suite to another suite is easy. As some modules are shared among suites, you never pay twice when adding features.

In addition, each suite uses consistent distributed architectural design, embedded terminals and management interfaces which means moving from module to module and suite to suite is simple.

INDUSTRY INNOVATIONS

While other solutions require multiple servers, contracts and help desk systems to deliver both print management and document capture, which increases your total cost of ownership, Y Soft offer a seamless, integrated solution.

YSoft SafeQ is also the first fully-featured enterprise print management solution offered across 2D and 3D print fleets.

THE YSOFT SAFEQ PLATFORM SUITES

YSoft SafeQ is integrated within the display panel of the world's most popular brands of MFDs (multifunction devices). The YSoft SafeQ Platform is offered in a choice of four modular suites.

YSOFT SAFEQ ENTERPRISE SUITE

YSoft SafeQ Enterprise Suite combines centralized enterprise print management with advanced document workflows in a single solution, maximizing productivity, reducing costs and increasing document security.

YSOFT SAFEQ PRINT MANAGEMENT SUITE

YSoft SafeQ Print Management Suite provides organizations with a centralized enterprise print management solution designed to reduce the costs of print services, increase document security and improve workflow productivity through a set of core document scanning features.

YSOFT SAFEQ WORKFLOW SUITE

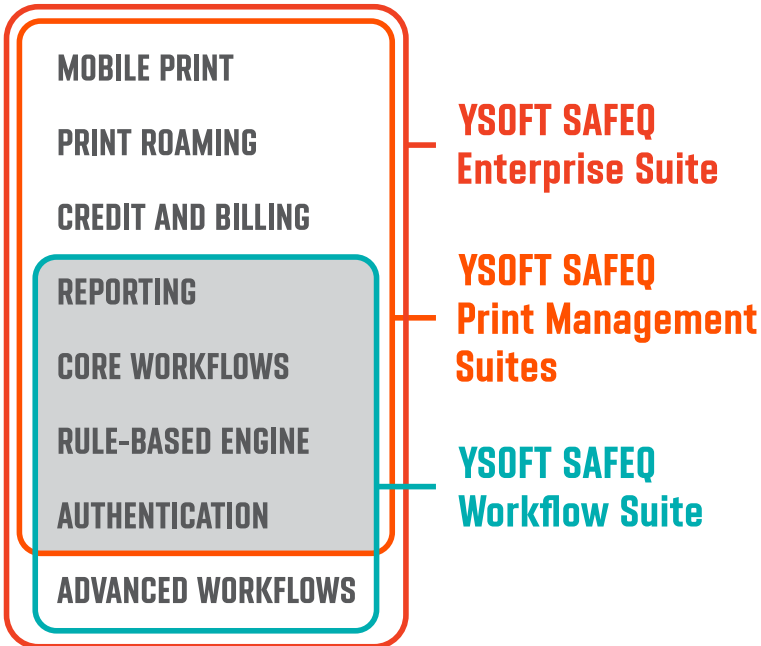
YSoft SafeQ Workflow Suite takes the complexity out of scanning and document workflow. Combining YSoft SafeQ's core and advanced document capture features, organizations can work smarter and maximize productivity while using digital workflows that result in consistent, accurate data capture. The Suite includes the YSoft SafeQ essential modules for secure access to perform document capture processes and to improve the security of documents in the workflows.

YSOFT SAFEQ PRINT MANAGEMENT SUITE LD

YSoft SafeQ Print Management Suite LD (Limited Devices) provides all the benefits of a centralized print management solution, with core workflow features, for select multifunctional devices—primarily A4 devices—in an affordable suite. With secure printing and Print Roaming, the LD suite brings additional value for these devices increasing the return on your investment.

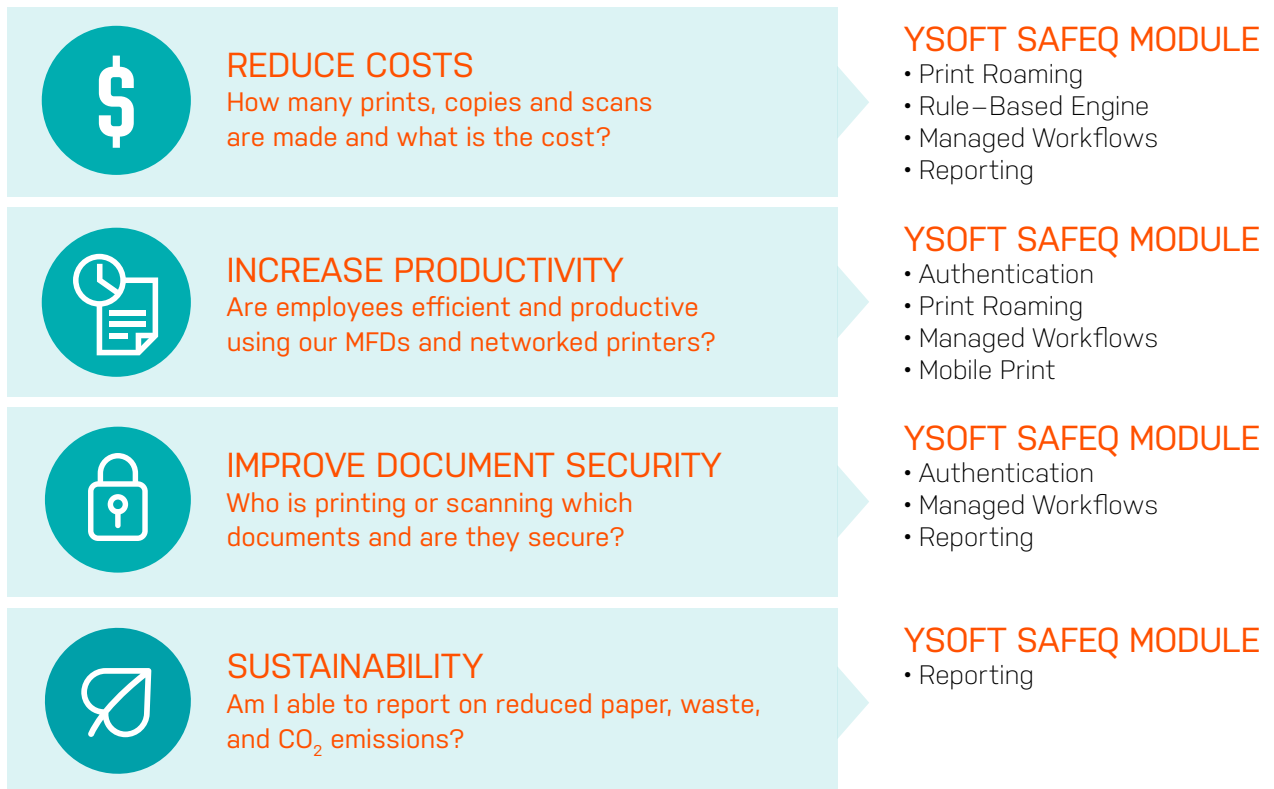
YSOFT SAFEQ SUITES AND SHARED MODULES

MODULES



Each YSoft SafeQ Suite is comprised of software modules that add specific functionality. While suites offer the best value, organizations can procure the functionality they need now with specific modules, knowing they have the ability to add modules as their needs grow. Modules are organized by print management, workflow and enterprise suites – four modules are common across all suites.

MEETING YOUR PRINT MANAGEMENT AND DOCUMENT CAPTURE WORKFLOW NEEDS



YSOFT SAFEQ PLATFORM MODULES	BENEFITS AT A GLANCE
AUTHENTICATION	<ul style="list-style-type: none"> • Protects against unauthorized users by securing access to MFD and documents • Documents remain secure until user authenticates via card reader, PIN, username/password or a combination • Reduces costs and paper waste when jobs are sent to print but are no longer needed • Easily assign print, copy and scan rights to users or user groups means easy IT administration
RULE-BASED ENGINE <small>Coming soon for document capture</small>	<ul style="list-style-type: none"> • Enforces print governance with a library of pre-defined rules for cost savings such as color to B/W, single to duplex and send to most economical device – or create your own rules • Notifications inform users of cost consequences which leads to better print usage, often reduced usage • Notifications if the user does not comply to cost savings policies help enforce print governance
PRINT ROAMING® / CLIENT BASED PRINT ROAMING™	<ul style="list-style-type: none"> • Secure printing from any MFD in the print environment • Scalable to your business needs from one office to multiple continents • Jobs print only when user authenticates eliminating sensitive documents in output tray • Optionally, reduces costly servers by handling complex print tasks on client workstation
MOBILE PRINT	<ul style="list-style-type: none"> • YSoft Wireless Print for Mac and iOS mobile devices ensures convenient, secure printing for mobile workers • Secure mobile printing via web or email to the MFD • Support for anonymous guest printing • Provides automatic conversion (JPG, PDF, DOC, PPT, XLS, PNG)
MANAGED WORKFLOWS: CORE AND ADVANCED WORKFLOWS	<ul style="list-style-type: none"> • One-click secure scanning to pre-defined SharePoint® and Dropbox® Business / Dropbox Enterprise document libraries makes document capture and distribution easy • Folder browsing, storing documents on behalf of user who made a scan for document storage under the MFD user's identity and barcode recognition • Scan to email, home folder or predetermined location via scripts • World-class OCR engine, image cleanup, append or prepend pages, blank page removal, highlight text naming and searchable PDF, Microsoft Word and Microsoft Excel
CREDIT AND BILLING	<ul style="list-style-type: none"> • Individual or group accounts make administrative tasks easier • Supports price lists, cost centers, billing codes and usage quotas for easy cost allocations • Support for pay-for-print services gives control for managing and recovering costs
REPORTING	<ul style="list-style-type: none"> • Predefined or custom management reports give fact-based data and usage audits • Executive and Green reports provide top level summarized results and sustainability information • CRS reports utilizing OLAP cubes and long term trend analysis help administrators manage their print fleet more efficiently

Your YSoft Partner



COPYTECH^{SAL}
SMART BUSINESS SOLUTIONS

www.copytech.com.lb
sales@copytech.com.lb
+961 1 682 991